

# OPHTHALMIC Product Guide

Special Advertising Section

**REVIEW**  
of OPTHALMOLOGY

**Dear Doctor,**

Review of Ophthalmology is pleased to offer you this preview of many exciting new products now available in the ophthalmic marketplace. Here, you'll learn about innovative new medications, diagnostic instruments, corrective lens options, in-office laboratory equipment and many other products. There are two ways to obtain more information on a particular product:

1. Go to [www.reviewofophthalmology.com](http://www.reviewofophthalmology.com), click Additional Publications, Product Guide digital edition, and then follow the prompts.
2. Circle the corresponding number on the enclosed reader service card for each product of interest. Fill in your name and address, and return the postage-paid card to us. Educational materials will be sent directly to you by the individual companies.

\* Also, be sure to watch for Daily Product Showcase E-blast deployments, highlighting these listings later this month.

**Circle No. 1**



**Refresh**  
CONCIERGE

EXCLUSIVE ACCESS TO ALL THINGS REFRESH.®



REFRESH®  
SAMPLES



PATIENT  
COUPONS



PRODUCT  
EDUCATION



REFRESH® DIRECT  
ECOMMERCE

Call us at **833-REF-SMPL** 7:30 a.m.–7 p.m. CT, M–F

© 2021 AbbVie. All rights reserved. All trademarks are the property of their respective owners. REF138377 07/20



**HELPING HEROES SEE CLEARLY & STAY SAFE**

Purchase (or lease) a BIO, choose a reward!

24-MONTH  
**0%**  
lease as low as \$128/month\*

RECEIVE A  
**\$850**  
credit towards any PPE

RECEIVE  
**10 FREE**  
bottles of phenylephrine  
2.5%, 15mL.

**Valid from 01/01/2022 to 03/31/2022**



**Circle No. 2**

**Keeler** – A world without vision loss –

Contact us for pricing & more information  
**800.523.5620 // 610.353.4350 // KEELERUSA.COM**

A Halma company

**NEW** Marketed as VITA-POS and HYLO Night in Europe. Now available in the US.

**Circle No. 3**

**OPTASE® HYLO NIGHT™**  
THE DRY EYE OINTMENT WITH A DIFFERENCE



**OPTASE® HYLO NIGHT™ & DRY EYE INTENSE DROPS**  
Bring comfort and relief to your patients day and night

OPTASE® DRY EYE INTENSE DROPS



OPTASE® HYLO NIGHT™



**24hr Dry Eye Management**

\*Hylo® A (Hydroxypropylmethylcellulose) is an inactive ingredient in OPTASE®HYLO NIGHT™

For more information visit [optase.com](http://optase.com)



**SCANMATE FLEX**

**DGH TECHNOLOGY INC.**  
THE ULTRASOUND SPECIALIST

**Circle No. 4**



- Ophthalmic ultrasound platform that is configurable to your needs
- Improved B-Scan probe design for better reliability
- Contact and Immersion A-Scans
- UBM Capabilities with ClearScan®
- Area, angle, length measurements, and annotation tool
- Easy export to your EMR/EHR of Videos, Images, and PDF files

(800) 722-3883  
[www.dghtechnology.com](http://www.dghtechnology.com)

Requesting product information is now fast and easy! Go to [www.reviewofophthalmology.com](http://www.reviewofophthalmology.com), click Additional Publications, Product Guide digital edition and follow the prompts to request product information.

# OPHTHALMIC

## Product Guide

### iCare HOME

24-hour at home tonometry

- + Easy to use
- + Remote diurnal IOP curve
- + Long term monitoring
- + Alert notifications



Circle No. 5

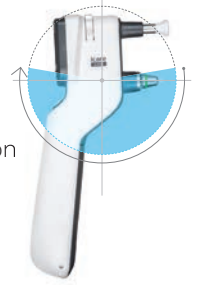
Call 888.422.7313 or email  
infousa@icare-world.com  
[www.icare-world.com/us](http://www.icare-world.com/us)

**icare**

### iCare IC200

200 degrees of tonometry

- + Supine, elevated & seated operation
- + No corneal disruptions
- + Suitable for every patient
- + Single use probes to exceed infection control guidelines



Circle No. 6

Call 888.422.7313 or email  
infousa@icare-world.com  
[www.icare-world.com/us](http://www.icare-world.com/us)

**icare**

### iCare DRsPlus

Circle No. 7

Automated TrueColor retinal imaging

- + TrueColor confocal imaging
- + Ultra high resolution
- + Fast image acquisition
- + No dilation (2.5 mm pupil size)
- + Space saving



Call 888.422.7313 or email  
infousa@icare-world.com  
[www.icare-world.com/us](http://www.icare-world.com/us)

**icare**

### iCare COMPASS

Circle No. 8

Fundus automated perimetry

- + Real-time retinal tracking
- + Imaging & Perimetry in one device
- + TrueColor confocal retinal imaging
- + No trial lens required
- + Significantly less variable than Standard Perimetry



Call 888.422.7313 or email  
infousa@icare-world.com  
[www.icare-world.com/us](http://www.icare-world.com/us)

**icare**

### PACHMATE 2

DGH TECHNOLOGY, INC.  
THE ULTRASOUND SPECIALIST

- Globally Recognized as the Leading Handheld Pachymeter
- Easy, Fast and Accurate
- Proven Accuracy & Reproducibility
- Customizable Settings
- Rapid Bilateral Measurements
- Durable Portability
- User Friendly



Circle No. 9

(800) 722-3883  
[www.dghtechnology.com](http://www.dghtechnology.com)

### HUVITZ 9000 SYSTEM

Circle No. 10

Reliable auto measurements, all wirelessly connected.

Elevate patient experience by upgrading to highly accurate digital subjective and objective refraction, with convenient, flexible display of detailed results. Full compatibility with all EMR systems.

#### HRK-9000A Auto Refractor/Keratometer

All-in-one objective refraction plus standardized subjective refraction

#### HDR-9000 Digital Refractor

Performs convenient 21-point exam package and advanced, customizable refraction

#### HLM-9000 Auto Lensmeter

Features wavefront technology and automatic lens recognition



COBURN TECHNOLOGIES

Coburn Technologies, Inc. ▲ (800) 262-8761  
[www.CoburnTechnologies.com](http://www.CoburnTechnologies.com)

# OPHTHALMIC

## Product Guide

### BQ 900® LED Slit Lamp

Fully integrated imaging solution

Choose the BQ 900 LED for advanced microscopy. The BQ 900 is powered by a long-lasting LED diode that offers exceptional detail and depth of field. It is the ultimate slit lamp due to its flexible modular design. The IM 900 imaging module offers a fully integrated imaging solution with unique features and technology. Other optional accessories include Teaching Scope, Inclined Eyepieces, Yellow Filter, Stereo Variator, and Beam Splitter.



Circle No. 11

**HS HAAG-STREIT**  
USA

800.787.5426  
haag-streit-usa.com

### BI 900® LED Slit Lamp

Simplified operation meets high reliability.

Equipped with an improved version of the BM 900 microscope, an enhanced illumination system and traditional high-precision mechanics, the BI 900 is the ideal successor to the BM 900. The BI 900 slit lamp combines simplicity and reliability in a modern system which offers integrated digital imaging as an option.



Circle No. 12

**HS HAAG-STREIT**  
USA

800.787.5426  
haag-streit-usa.com

### Reliance FX-920®

The standard for chair design

The FX-920 sets the standard for design while retaining the core value of all Reliance products - rugged durability. All surfaces of the chair are designed to support a patient's entire weight. Ergonomic full power tilt is efficient for the practitioner and comfortable for the patient. A full complement of controls is available on both sides of the chair, while the detached dual footswitch adds flexibility.



Circle No. 13

**HS HAAG-STREIT**  
USA

800.787.5426  
haag-streit-usa.com

### LENSTAR® APS Optical Biometer

Advanced biometry—better outcomes

The LENSTAR LS 900 with Automated Positioning is all you need for faster, more efficient biometry. Its easy mechanical tracking minimizes user delay and error, delivering more reliable results and a more comfortable patient experience. The dual zone keratometry with 32 measurement points provide precise K values, essential for planning toric lens implantation. With its integrated Olsen and Barrett formulas, as well as exclusive availability of the Hill-RBF Method 3.0 for IOL calculation, the LENSTAR provides the user with the best possible IOL prediction.



Circle No. 14

**HS HAAG-STREIT**  
USA

800.787.5426  
haag-streit-usa.com

### Octopus 600®

Early diagnosis and standard white-on-white perimetry in one device

The Octopus 600, with EyeSuite Progression Platform, extends Haag-Streit's product range of visual field analyzers, combining the Pulsar method for early glaucoma detection and standard White/White perimetry for long term follow-up in one compact and stand-alone device. Unique fixation control for blinking, pupil position, darting and forehead contact, yields more reliable results, and with our Tendency Oriented Perimetry (TOP strategy), thresholds are performed in 2 ½ minutes.



Circle No. 15

**HS HAAG-STREIT**  
USA

800.787.5426  
haag-streit-usa.com

### Octopus 900®

Versatility PLUS connectivity!

The Octopus 900, with EyeSuite Progression Platform, is the most versatile perimeter available. The Octopus 900 features more options for reliable testing, including: static White/White, Blue/Yellow, Red/White, Flicker, Low Vision and computer-assisted true Goldmann Kinetic, TOP Strategy for thresholds in 2-1/2 minutes and our unique fixation control. EyeSuite, the industry's most advanced software for progression analysis, includes the first perimetric analysis to combine structure and function with real-time interactive access to all perimetric data with easy networking and free viewing stations.



Circle No. 16

**HS HAAG-STREIT**  
USA

800.787.5426  
haag-streit-usa.com

# OPHTHALMIC Product Guide

Circle No. 17

## Phoroptor® VRx

### Digital Refraction System

**A premium digital refraction experience at a safe distance.**

Featuring the thinnest, most compact design, incredibly fast lens exchanges, motorized prisms, split cylinder lenses, and ultra-quiet operation, **Phoroptor® VRx** sets new standards in refraction. The ergonomic keypad features a multi-function control knob with unmatched feel and versatility, while the intuitive touch-screen interface has all the pre-programmed and programmable tests you'll need.

Phoroptor VRx provides a premium digital refraction experience at a safe distance, now from across the room or across the Internet. Phoroptor VRx is the only system that connects to all major brands of pretest devices and EMR platforms.

Designed and assembled in the USA



Circle No. 18

## ClearChart® 4

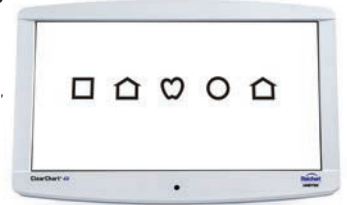
### Digital Acuity Systems

**Pixel-perfect and purpose-built.**

The family of ClearChart® Digital Acuity Systems are elegant, all-in-one, simple-to-use, and uniquely designed to meet all of your acuity testing needs with a wide selection of optotypes and other special test charts.

The ClearChart family all feature a 24 inch, high resolution, LED backlit display that are lightweight, cool running and long-lasting. The **ClearChart® 4X** Enhanced Digital Acuity System, and the **ClearChart® 4P** Polarized Digital Acuity System are now available with **LEA SYMBOLS®** and **LEA NUMBERS®**. The intuitive user interface provides the best user experience of any digital acuity chart.

Designed and assembled in the USA



## Ocular Response Analyzer® G3

### Corneal Hysteresis: Measure Beyond Pressure.

**Provide a more confident glaucoma risk assessment and a more personalized treatment approach.**

**Ocular Response Analyzer®** is the only device that measures Corneal Hysteresis, a superior predictor of glaucoma progression. Corneal Hysteresis has consistently shown to be a more powerful predictor of, and strongly associated with, glaucoma progression, more so than key risk factors such as IOP and CCT.

Designed and assembled in the USA



## Reichert® 7CR

### Non-Contact Tonometer

**A better pressure measurement with Corneal Response Technology®.**

In 1972, Reichert® invented the non-contact tonometer (NCT), and continues to innovate tonometry with the clinically advanced and easy-to-use **Reichert® 7CR**.

Using patented Corneal Response Technology® which takes corneal biomechanics into account, Reichert 7CR provides Corneal Compensated IOP (IOPcc), a better pressure measurement.

Designed and assembled in the USA



Circle No. 19

## Tono-Pen®

### Handheld Tonometers

**Reichert® Tono-Pen® has been the trusted choice of clinicians for over 30 years.**

**Tono-Pen®** helps to provide essential care while keeping your patients and staff protected. Tono-Pen AVIA® applanation tonometer now with **Quick-Tap® Measurement Mode** is ready-to-use, calibration-free, and accurate – **with more confidence in fewer measurements.**

Tono-Pen is less sensitive to corneal centration, ensuring fast and accurate IOP measurements with minimal training.

Protect your Tono-Pen and patients with genuine, FDA cleared Reichert®

**Ocu-Film® + Tip Covers.**

Designed and assembled in the USA



Circle No. 20

## Ocu-Film® + Tip Covers

### Tono-Pen® Tip Covers

**Protect your Tono-Pen® Handheld Tonometer and your patients.**

Genuine blue Reichert® **Ocu-Film® + Tip Covers** protect your Tono-Pen® Tonometers from dust and fluids, and help protect patients from the risk of cross contamination. Ocu-Film+ Tip Covers are single-use, sanitized, and easy-to-apply. Ocu-Film+ Tip Covers are FDA cleared and the only Reichert® approved tip covers for use with Tono-Pen Tonometers. Ocu-Film+ Tip Covers are available individually packaged in boxes of 150 or bulk packs of 600.



Circle No. 21

Circle No. 22

LEA SYMBOLS and LEA NUMBERS are registered trademarks of LEA Test, Int'l, LLC

# OPHTHALMIC

## Product Guide

### Surgeon's Choice

Circle No. 23

Customization Made Simple.

- ASC improves efficiency and room flow.
- Surgical team members reduce prep time and waste.
- Each surgeon has his/her preferred disposable instruments on hand.

Learn more, call (844) 820-8940



Scan to schedule a workshop.



LIT-SRGC-AD1 Rev.0 1.2022



### ALADDIN-M

BIOMETER + CORNEAL TOPOGRAPHER

The efficient, affordable and easy way to measure and monitor axial length.

- Axial length and refractive error trend reports
- Contact lens fitting software
- Corneal topography with aberration maps and white-to-white measurement

Contact (800) 223-1130  
[topconhealthcare.com/aladdin-m](http://topconhealthcare.com/aladdin-m)



Circle No. 24

### SOFT SHIELD® Collagen Shield

Indicated for ocular surface protection following surgery, injection, traumatic, and non-traumatic corneal conditions.

- Available dissolutions times: QS, 12 hour, 24 hour, 72 hour
- Thin, purified 14.5-mm diameter collagen shield

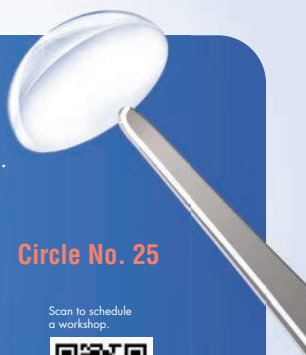
Learn more, call (844) 820-8940



Scan to schedule a workshop.



LIT-SS-AD1 Rev.0 1.2022



### CHRONOS

AUTOMATED BINOCULAR REFRACTION SYSTEM

It's time to make refractions faster.

- Combines autorefractometry, keratometry and subjective refraction in a single device
- Takes up less than 4 ft. of space
- SightPilot® guided refraction software can be easily operated by a trained technician

Contact (800) 223-1130  
[topconhealthcare.com/chronos](http://topconhealthcare.com/chronos)



Circle No. 26

### NEW Slit Knife RIB&R



FEATHER® MICRO FEATHER Ophthalmic Scalpel (Reusable)

- Lightweight, aluminum handle with textured grip for control
- Arrowhead-shaped curved edge with both sides of the knife thinly grinded for improved operability
- Ultra sharp

Learn more, call (844) 820-8940



Circle No. 27

Scan to schedule a workshop.



UTF-AD1 Rev.0 1.2022



### MAESTRO2

ROBOTIC OCT + FUNDUS CAMERA

Affordable and Easy-to-Use OCT

- Single touch automated capture
- 12x9mm 3D wide scan captures macula and optic disc and includes the Hood Report for Glaucoma
- Space saving design fits into any practice setting

Contact (800) 223-1130  
[topconhealthcare.com/OCT](http://topconhealthcare.com/OCT)



Circle No. 28

# OPHTHALMIC

## Product Guide

### YPA-2100 DIGITAL REFRACTOR BY YEASN

#### YPA-2100

Simplicity, imbued with precision.

Every detail is modernized, integrated into a seemingly simple but excellent and precise design.

#### Tablet Touch Control

Connected with control terminal through built-in WIFI, supporting multi-touch/gesture control.

#### Real-time Graphical User Interface

Minimum training time and cost, fast and easy operation.

#### Ultrathin Design

Ultrathin body with maximum thickness of 92 mm.

#### Connectivity

EMR ready and easily connects to most popular auto refractors and Lensmeters.

Stop paying more for less!

Circle No. 29



Eyeefficient ▲ 800-417-8136  
www.eyefficient.com

### MEDIWORKS FC-161 DRAGONFLY PORTABLE FUNDUS CAMERA

Why the Dragonfly is perfect for your practice.

- High Resolution
- Non-mydratric
- 9 Fixation Targets
- Smart Touch Operation
- Real-time Uploading



Circle No. 30



Eyeefficient ▲ 800-417-8136  
www.eyefficient.com

### MEDIWORKS FIREFLY DIGITAL SLIT LAMP FROM EYEFFICIENT

- Color images and video
- Meibography
- Automatic Exposure
- Integrated Wratten Filter
- Online live demos available



Circle No. 31

Eyeefficient ▲ 800-417-8136  
www.eyefficient.com

### MEDIWORKS SLIT LAMPS FROM EYEFFICIENT

- HD Optical System
- LED Illumination
- Built in Yellow Filter
- Imaging ready
- Two styles to choose from



Circle No. 32

Eyeefficient ▲ 800-417-8136  
www.eyefficient.com

Upgrade your HFA and Save \$10,000 with OPTOPOL



Optopol PTS 2000  
Automated Projection Perimeter

Perimetry  
Redefined.

Circle No. 33

See why over 6,000 Eye Care professionals have switched to Optopol Perimeters.

## Identify Binocular Vision Disorders in 30 seconds

RightEye Sensorimotor™ System uses advanced eye-tracking technology to screen and recommend treatment for BVD.

Provide better care for

30%  
of patients.

Circle No. 34



Fast, objective, insurance reimbursable, profitable.

WWW.RIGHTEYE.COM | (301) 979-7970

# OPHTHALMIC

## Product Guide

### VISION-S 700 REFRACTION STATION

> Space saver and game changer with speed and accuracy built on exclusive innovation

- Standalone, ultra-compact tabletop subjective refraction unit
- Patented Digital Infinite Refraction method and exclusive optical module
- High degree of accuracy with rapid 3-minute refractions
- Concentrates a complete refraction experience into an immersive station
- Unique refraction experience that can potentially drive traffic, differentiate the practice, facilitate the discussions about complimentary pairs, and transform the overall business potential



CONSOLE



Circle No. 35



### VISION-R 700 REFRACTION SYSTEM

> Accelerate refraction without compromising on accuracy

- Innovative technology with the exclusive optical module
- Adjust the cylinder and axis simultaneously while compensating for the sphere
- Automated Smart programs and algorithms to guide the ECP
- Silent and smooth lens changes enhance the patient experience



CONSOLE



CHART SCREEN: VISION-C 600



Circle No. 36



### WAM 800 WAVEFRONT ABERROMETER

> Fully-automatic for complete anterior chamber analysis and visual need assessment

- Fast, effective, and space-saving
- 7 detailed tests in 90 seconds; both eyes
- Glaucoma screening and monitoring, keratoconus detection, and cataract screening
- Performance evaluation with eye strain and near-vision assessment and vision simulation



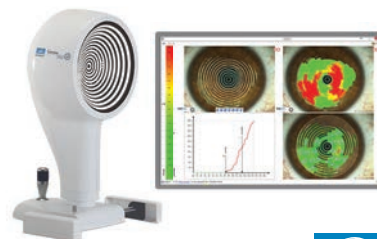
Circle No. 37



### CORNEA 550 CORNEAL TOPOGRAPHER

> Specially designed for contact lens fitting and dry eye analysis

- High-resolution color camera
- Wide array of graphic representations
- Advanced qualitative and quantitative tear film assessment
- Dynamic and static capture pupillometry
- Independent screen to facilitate the sharing of results
- Newly-enhanced AnaEyes software to provide one graphical summary report



Circle No. 38



### AKR 750 AUTO KERATO-REFRACTOMETER

> Fast, accurate and fully automatic : an ideal solution for delegating patient measurement

- One-touch button measuring process for both eyes
- Ultra-precise measurement for even small diameter pupils
- Auto and manual measurement modes available
- Wide range of measures including peripheral keratometry with eccentricity
- Large 7.5" tilting screen for easy operation
- Automatic data transfer to APH 550



■ Unique "scanning window" with smooth and silent movement to create comfortable and stress-free exam atmosphere



Circle No. 39



### OCT 500 ADVANCED ROBOTIC OCT

> Optical coherence tomography with integrated fundus imaging

- Superb OCT technology ready for delegation
- Fully-automatic operation with follow-up scan function
- True-color fundus photography
- Extended range of analysis function for the pupil and the macula
- Compact and space-saving design

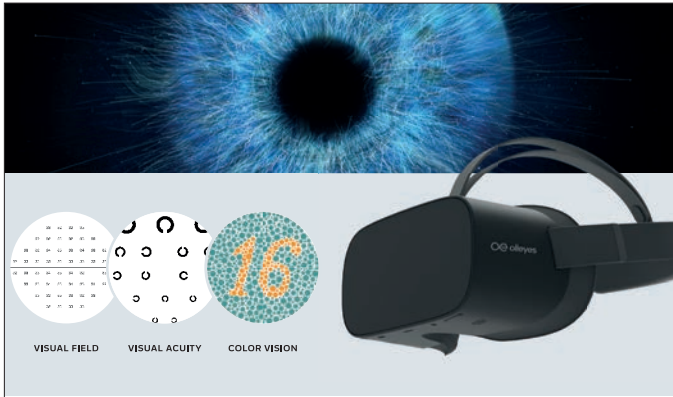


Circle No. 40



# OPHTHALMIC

## Product Guide



### Circle No. 41

Increase your practice efficiency and productivity with the **VisuALL VRP**

The **VisuALL Virtual Reality Platform** delivers fast, comfortable, and clinically validated visual field examinations and more. For more information, visit [olleyes.com](http://olleyes.com)

### ANTERION® Imaging App ~ Now Available in the U.S.

ANTERION is a swept-source OCT that delivers high-resolution visualization of the entire anterior segment.



### Circle No. 42

**HEIDELBERG ENGINEERING**

[ANTERION.com](http://ANTERION.com) • 1-800-931-2230

### Heidelberg Image Quality

Transform your workflow with SPECTRALIS®, a modular imaging platform where every image is remarkably accurate and reliably repeatable.



### Circle No. 43

**HEIDELBERG ENGINEERING**

[HeidelbergEngineering.com](http://HeidelbergEngineering.com) • 1-800-931-2230



## THE RICK BAY FOUNDATION

*for Excellence in Eyecare Education*

[www.rickbayfoundation.org](http://www.rickbayfoundation.org)

### *Support the Education of Future Healthcare & Eyecare Professionals*

Scholarships are awarded to advance the education of students in both **Optometry** and **Ophthalmology**, and are chosen by their school based on qualities that embody Rick's commitment to the profession, including integrity, compassion, partnership and dedication to the greater good.

### Interested in being a partner with us?

Visit [www.rickbayfoundation.org](http://www.rickbayfoundation.org)

*(Contributions are tax-deductible in accordance with section 170 of the Internal Revenue Code.)*



THE RICK BAY FOUNDATION  
*for Excellence in Eyecare Education*

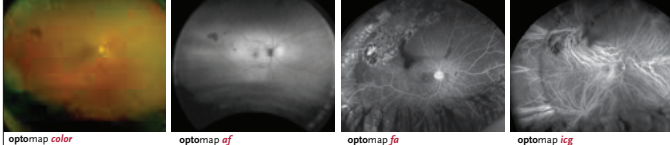
*(The Rick Bay Foundation for Excellence in Eyecare Education is a nonprofit, tax-exempt organization under section 501(c)(3) of the Internal Revenue Code.)*



# OPHTHALMIC

## Product Guide


**optomap®**  
Single-capture UWF Retinal Imaging...



optomap color    optomap cf    optomap fa    optomap ig

...from a safe distance

optomap® high resolution, ultra-widefield images help you see and document the retina with no face-to-face interaction.



**Nikon**    Circle No. 44    **optos®**  
optos.com

## MARKET LEADING INDIRECTS

Circle No. 45



**Vantage Plus**

**All Pupil II**

- Interchangeable LED or xenon illumination
- Lightweight Slimline lithium polymer battery
- Wide range of filters & apertures
- Exclusive to Vantage Plus:
  - Intelligent Optics
  - HiMag™ lens: additional 1.6x magnification allows for superb stereoscopic images

**Keeler**    Contact us for pricing & more information  
- A world without vision loss -    800.523.5620 // 610.353.4350 // KEELERUSA.COM    A Halma company

INTRODUCING

## PICTOR Prestige™

Circle No. 46



**Image Anyone. Anywhere.**

- Powerful **small pupil capability** allows imaging through pupils - 3 mm
- Get a **full day of Imaging** on just one charge
- **Onboard Image Quality Analysis** ensures you never retake an image
- Lifetime access to the Prestige Studio offers functionality such as **filters, montaging, and report generation**
- Qualify for incentives like ADA IRS **Tax credit** and Section 179 Deduction
- New Special Pricing: \$ 7595

**VOLK**    (800) 345-8655 | volk@volk.com | volk.com

## THE BEST OF BOTH WORLDS

Circle No. 47



**AccuPen®:**

- Portable handheld tonometer
- Micro strain gauge provides precise IOP measurements with minimal calibration needed

**PachPen®:**

- Portable handheld pachymeter
- 65 MHz sampling rate ensures precise measurements
- Digital signal analysis eliminates the need for calibration and only measures when properly aligned

**Keeler**    Contact us for pricing & more information  
- A world without vision loss -    800.523.5620 // 610.353.4350 // KEELERUSA.COM    A Halma company

## Healthy Eyes Start Here

### Accept No Substitutes.

The #1 Doctor Recommended **Bruder Mask** delivers clean, even heat to improve oil flow and relieve dry eye symptoms.

- ✓ Patented silver-infused, anti-bacterial MediBeads®
- ✓ 2-pod design provides superior comfort, fit and conformance
- ✓ Retains full efficacy when washed

Now available in two packaging options: **professional** or our new **retail package**

**Circle No. 48**

**Bruder** | Better. By Design.    Want to know more?  
Email [eyes@bruder.com](mailto:eyes@bruder.com) or call 888-827-8337



## EASY-TO-USE PLATFORM

— 4SIGHT® —



- Combines A-Scan®, UBM®, B-Scan®, and Pachymeter® into one platform
- Easy data transfer between modalities, including DICOM<sup>SM</sup>, for higher patient throughput
- Unsurpassed accuracy and image quality

**Circle No. 49**

**Keeler**    Contact us for pricing & more information  
- A world without vision loss -    800.523.5620 // 610.353.4350 // KEELERUSA.COM    A Halma company

# OPHTHALMIC

## Product Guide

### ERK-BH

#### AUTOREFRACTOR KERATOMETER

Circle No. 50



- High Reliability and Precision
- Peripheral Keratometry
- Semi Auto Tracking
- Retroillumination
- Automatic Trigger



✉ info@usophthalmic.com ☎ 1.888.881.1122 🌐 www.usophthalmic.com

### EDR-H

#### DIGITAL REFRACTOR

Circle No. 51



- Fast and Silent Mode
- Ergonomic Design
- EMR Ready
- Dual Cross Cylinder Test
- Large Touch Screen



✉ info@usophthalmic.com ☎ 1.888.881.1122 🌐 www.usophthalmic.com

### EFC-2600

#### FUNDUS CAMERA

Circle No. 52



- Fully Automatic
- Mosaic Feature
- 45-100 Degree Visual Field
- Non-mydiatric
- Posterior and Anterior Segment



✉ info@usophthalmic.com ☎ 1.888.881.1122 🌐 www.usophthalmic.com

### ETN-1800

#### NON-CONTACT TONOMETER

Circle No. 53



- Fully Automated 3D Eyetracking
- Soft Air Puff
- User Friendly Touch Screen



✉ info@usophthalmic.com ☎ 1.888.881.1122 🌐 www.usophthalmic.com

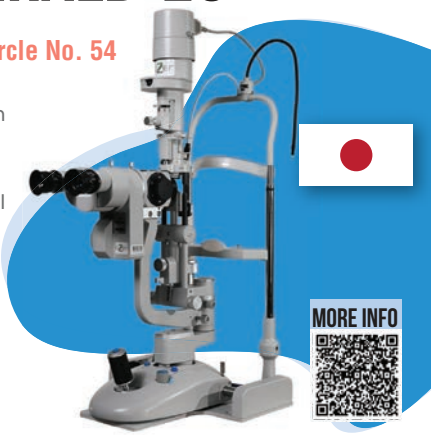
### ESL-EMERALD-26

#### SLIT LAMP

Circle No. 54



- 5 Step Magnification
- LED or Halogen Illumination
- Unparalleled Optical Quality
- Video Imaging



✉ info@usophthalmic.com ☎ 1.888.881.1122 🌐 www.usophthalmic.com

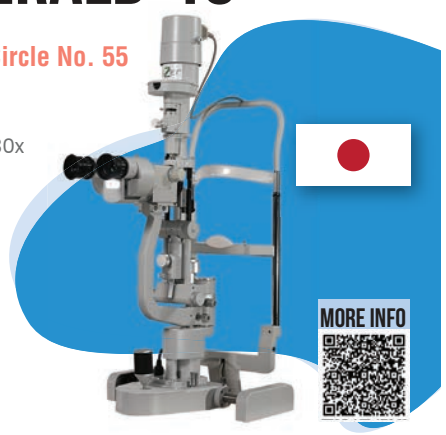
### ESL-EMERALD-18

#### SLIT LAMP

Circle No. 55



- Continuous Zoom
- Range from 10x to 30x
- LED or Halogen Illumination
- Unparalleled Optical Quality



✉ info@usophthalmic.com ☎ 1.888.881.1122 🌐 www.usophthalmic.com

# OPHTHALMIC

## Product Guide

### EUS-2600 UBM ULTRASOUND BIOMICROSCOPE



- A-Scan, B-Scan & UBM
- TGC
- Image Processing Software
- 6 IOL formulas and 5 post-refractive IOL formulas



Circle No. 56



info@usophthalmic.com 1.888.881.1122 www.usophthalmic.com

### EUS-1800 AP BIOMETER + PACHYMETER



- Dual Scanning Probes
- Several A-Scan Measuring Modes
- Automatic A-Scan Readings
- IOL Calculation
- Accurate Corneal Thickness



Circle No. 57



info@usophthalmic.com 1.888.881.1122 www.usophthalmic.com

### AP-300 PERIMETER

Circle No. 58



- Accurate Results
- Rapid Testing Times
- Fundus Overlay Function
- Automatic Pupil Detection



info@usophthalmic.com 1.888.881.1122 www.usophthalmic.com

### EYER M-STD RETINAL CAMERA



- Posterior and Anterior Segment
- High Quality Exams
- Non-mydiatics
- Easy to operate
- Portable



Circle No. 59



info@usophthalmic.com 1.888.881.1122 www.usophthalmic.com

### EDC-2600 SMART CHART SYSTEM WITH FULL HD LCD

Circle No. 60



- Smart Chart System
- Wide Range of Tests
- Adjustable Test Distance
- Custom Slides



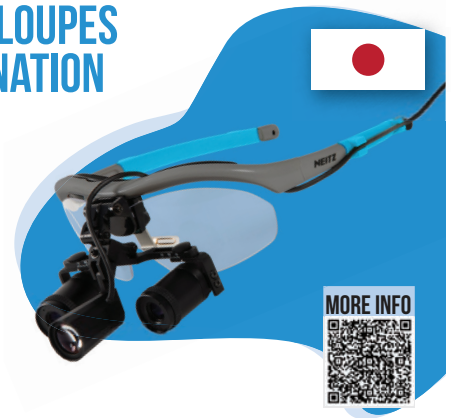
info@usophthalmic.com 1.888.881.1122 www.usophthalmic.com

### NTZ-BLP BINOCULAR LOUPES WITH ILLUMINATION

Circle No. 61



- Magnification
  - 5.5x to 6.0x
  - 4.0x to 4.5x
  - 2.5x to 3.0x
  - 2.0x to 2.5x
  - 1.5x to 2.0x



info@usophthalmic.com 1.888.881.1122 www.usophthalmic.com

# OPHTHALMIC

## Product Guide

Circle No. 62

### Rx STRENGTH EYE ALLERGY ITCH RELIEF



## LASTACFT®

Alcaftadine ophthalmic solution 0.25%  
Antihistamine Eye Drops

**AVAILABLE OTC THIS SPRING**

© 2022 AbbVie. All rights reserved. All trademarks are the property of their respective owners.  
US-LAS-220001 01/22

Keep the Light On  
with the OCULUS Easyfield® C

A complete perimeter with  
no dark room required!

Circle No. 63

To learn more, visit  
[www.ocususa.com](http://www.ocususa.com)



Meet Theia - Your New AI Tech

## THE FUTURE OF AMD CARE STARTS NOW

Your optometric peers are implementing the **AdaptDx Pro®** guided by **Theia™** as the functional complement to structural imaging to better detect and monitor AMD. Discover how our AMD Excellence Program® empowers you to change the future of AMD care.



Circle No. 64



**NEW!**

**LOMBART**  
ADVANCING EYECARE™

### VIRTUAL FIELD

Circle No. 65

The Virtual Field provides greater efficiencies with reduced testing time and the ability to test multiple patients at once. It is easy to clean and no eye patch is necessary for patients. The mobile and lightweight design allows patients to be tested anywhere with wifi access.



#### FEATURES

- Progression analysis
- Monocular or binocular testing
- Access results from any laptop, tablet, or mobile device
- Audio instructions and error prompts in 34 languages
- Download reports as PDF/JPG files for upload into any EHR
- Qualifies for ADA tax credit

CONTACT LOMBART AT 800-LOMBART | [LOMBARTINSTRUMENT.COM](http://LOMBARTINSTRUMENT.COM)

### PREVENT AMD VISION LOSS WITH DIGITAL HEALTHCARE



Real-world data shows that **ONLY 34%** of patients are diagnosed with functional vision ( $\geq 20/40$ ) at wet AMD treatment initiation using conventional methods alone.

The ForeseeHome® AMD Monitoring Program is a home-based digital health program that supports the early detection of wet AMD with functional vision at no cost to your practice.

FDA Cleared | Medicare Covered

Circle No. 66

**ForeseeHOME™**  
AMD Monitoring Program

BY



Notal Vision Monitoring Center | (855) 600 3112  
[www.ForeseeHome.com/doctor](http://www.ForeseeHome.com/doctor)

### VISIBLE GENOMICS

Visible Genomics provides **Risk and Progression assessments for Age-related Macular Degeneration (AMD)** using patients genetic information (gathered from in-office cheek swab) and combines it with ocular findings, the patients demographic, and lifestyle risk factors to deliver a clinically actionable risk-assessment in one, easy to read report.

To learn more, contact us at:  
**Visible Genomics**  
Oakbrook Terrace, IL 60181  
[sales@visiblegenomics.io](mailto:sales@visiblegenomics.io)



Circle No. 67



Visible Genomics ▲ (855) 693-9377  
[www.visiblegenomics.com](http://www.visiblegenomics.com)